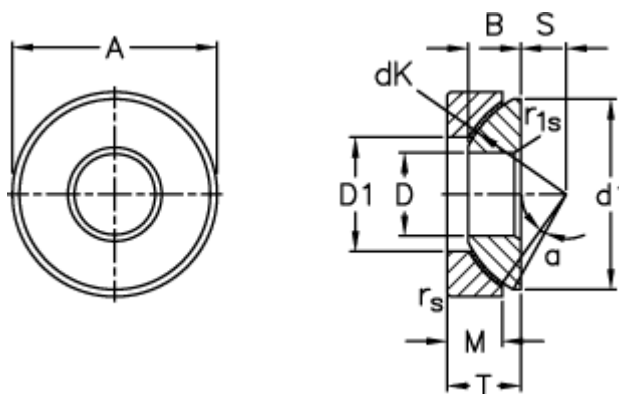


Article number: 03512035

Description: Fluro Rod end GE 35AW

Measures



A	= 90 0 -0,015	rs, r1s min	= 1
B	= 22	S	= 22
D	= 35 0 -0,012	Static axial load C0 (kN)	= 1040
d1 max	= 84	T	= 28 +0,25 -0,40
D1 min	= 50.5	Tilt angle	= 5
dK	= 98	Weight	= 973
Dynamic axial load C (kN)	= 520		
M	= 20.7		